

PROSERIES 100 VALVES

Application: Residential / Commercial / Dirty Water



These reliable valves offer a straight-through flow pattern, reducing the risk of failure due to trapped debris.

It has both an internal bleed and external bleed screw in addition to optional flow control. The inside diameter (ID) is 1" (2,5 cm) slip and glue or NPT/BSP.

Features and Benefits

- **Heavy Duty, Corrosion and UV Resistant PVC Construction** – Increases the life of the valve.
- **Tilt Diaphragm/Piston Assembly** – Allows for a straight flow path of water, increasing the flow rate while reducing friction loss.
- **Debris Tolerant Design** – Offers flexibility for use in potable or dirty water applications.
- **Manual External Bleed Screw** – Provides for manual operation in system start up.
- **Manual Internal Bleed Through Solenoid** – Permits manual operation without discharging water outside valve.
- **Flow Control with Removable Handle** – Delivers precise flow adjustment to the zone and allows you to remove the handle to prevent tampering (Except NFC).
- **Captured Plunger** – Remove the solenoid without losing the internal plunger.
- **Self Cleaning Screen** – Screen is in turbulent flow of water for self-cleaning action during operation.

Specifications

OPERATING SPECIFICATIONS

- Pressure Rating: 20 – 150 PSI (1,4 – 10,3 bar)
- Flow Range: .25 – 35 GPM (0,95 – 133 LPM)

PROSERIES 100 1" AND 3/4" VALVES

Flow Rate - GPM	5	10	15	20	30
PSI Loss	2.2	3.0	3.5	4.0	5.0

Pressure range: 20-150 psi (1,4 - 10,3 bar)

ELECTRICAL SPECIFICATIONS

- Solenoid: 24V AC 60 Hz
- Inrush Current: .43 Amps
- Holding Current: .25 Amps

DIMENSIONS

- Height: 4" (10,2 cm)
- Width: 3" (7,6 cm)
- Length: 5 1/4" (13,3 cm)

FLOW THROUGH

The unique tilted diaphragm creates a better flow path than traditional globe style electric valves by decreasing friction loss and increasing flow rate.



SELF-CLEANING SCREEN

The straight flow path allows debris to move through and the turbulent water flow cleans the diaphragm filter screen. This provides long life in applications using well or lake water.



CAPTURED PLUNGER SOLENOID

Easy removal when servicing without losing internal parts. Epoxy encapsulated solenoid design ensures longevity unlike the competition's overmolded solenoid.



MANUAL FLOW CONTROL

Precisely adjust flow to the zone. Removable handle prevents tampering.



Models

7001	1" (2,5 cm) Female Thread x Female Thread
7001-SL	1" (2,5 cm) Female Slip
7001-BSP	1" (2,5 cm) Female BSP Thread
7001-NFC	1" (2,5 cm) Female Thread
7001-SL-NFC	1" (2,5 cm) Female Slip without Flow Control
7001-BSP-NFC	1" (2,5 cm) Female BSP Thread without Flow Control
7001-MXB	1" (2,5 cm) Male Thread x 1" (2,5 cm) Male Barb
7001-MXM	1" (2,5 cm) Male Thread x 1" (2,5 cm) Male Thread
7001-BSP-MXM	1" (2,5 cm) Male BSP Thread x 1" Male Thread
7001-MXM-NFC	1" (2,5 cm) Male Thread x 1" (2,5 cm) Male Thread without Flow Control

7001-BSP-MXM-NFC	1" (2,5 cm) Male BSP Thread x 1" Male Thread without Flow Control
7001-MXB-NFC	1" (2,5 cm) Male Thread x 1" (2,5 cm) Male Barb without Flow Control
7075	3/4" (19 mm) Female Thread
7075-NFC	3/4" (19 mm) Female Thread without Flow Control
7075-SL	3/4" (19 mm) Female Slip
7075-SL-NFC	3/4" (19 mm) Female Slip without Flow Control
7075-BSP	3/4" (19 mm) Female BSP Thread
7075-BSP-NFC	3/4" (19 mm) Female BSP Thread without Flow Control

All valves equipped with 24VAC Solenoids.

Other options add to part number:

-9VDC	9 Volt DC Solenoid
--------------	--------------------



PROSERIES 150 VALVE

Application: Residential / Commercial



The K-Rain® ProSeries 150 Valves offer the irrigation professional a wide array of features and benefits.

The 1", 1-1/2" and 2" (2,5 cm, 3,8 and 5 cm) models have a removable metering pin and external bleed screw promoting easy maintenance and manual operation.

The Jar-Top valve provides the professional contractor easy servicing access.

The 1-1/2" and 2" (3,8 and 5 cm) models feature a removable inlet cap to easily modify configuration from globe to angle.

Features and Benefits

ALL MODELS

- **Heavy Duty, Corrosion and UV Resistant PVC Construction** – Increases the life of the valve.
- **Manual External Bleed Screw** – Provides for manual operation in system start up.
- **Manual Internal Bleed through Solenoid** – Provides for manual operation without discharging water outside the valve.
- **Captured Plunger** – Allows for the solenoid to be removed without losing the internal plunger.
- **Flow Control** – Allows for precise flow adjustment.

1", 1-1/2" AND 2" MODELS

- **External Bleed Screw with Removable Metering Pin** – Allows for easy cleaning of the metering pin without disassembling the valve.

1-1/2" AND 2" MODELS

- **Removable Inlet Cap** – Allows for easy conversion from globe to angle-style valve.
- **Heavy Duty Santoprene® Diaphragm** – Unique design improves durability of diaphragm.

JAR-TOP MODELS

- **Threaded Jar-Top** – Allows for quick removal of the cap for easy servicing after installation.
- **Glass-Filled Nylon Screw Cap** – Increased durability.

Models

7101	1" (2,5 cm) Female Thread, NPT
7101-SL	1" (2,5 cm) Female Slip
7101-BSP	1" (2,5 cm) Female Thread, BSP
7101-BSP-FC	1" (2,5 cm) Female Thread, BSP with Flow Control
7101-FC	1" (2,5 cm) Female Thread, NPT with Flow Control
7101-SL-FC	1" (2,5 cm) Female Slip with Flow Control
7101-J	1" (2,5 cm) Female Thread Jar-Top, NPT
7101-J-SL	1" (2,5 cm) Female Slip Jar-Top
7101-J-BSP	1" (2,5 cm) Female Thread Jar-Top, BSP
7101-J-MXB	1" (2,5 cm) Male Thread x 1" (2,5 cm) Barb Jar-Top
7115	1 1/2" (3,8 cm) Female Thread
7115-BSP	1 1/2" (3,8 cm) Female Thread, BSP
7102	2" (5 cm) Female Thread
7102-BSP	2" (5 cm) Female Thread, BSP

Specifications

OPERATING; 1" (2,5 CM) MODELS

- Pressure Rating: 10 – 150 PSI (0,7 – 10,3 bar)
- Flow Range: .25 – 30 GPM (0,95 – 113,8 LPM)

7101 PROSERIES 150 1" (2,5 CM) VALVE

Flow Rate - GPM	5	10	15	20	30
PSI Loss	2.9	2.1	1.8	3.0	5.0

7101-FC PROSERIES 150 1" (2,5 CM) VALVE

Flow Rate - GPM	5	10	15	20	30
PSI Loss	6	4.1	4.1	3.1	6.0

PROSERIES 150 1" (2,5 CM) VALVE WITH JAR-TOP

Flow Rate - GPM	5	10	15	20	30
PSI Loss	3.3	3.9	2.9	3.2	6.1

Pressure range: 10-150 psi (0,7 a 10,3 bar)

OPERATING; 1-1/2" & 2" (3,8 & 5 CM) MODELS

- Pressure Rating: 20 – 150 PSI (1,4 – 10,3 bar)
- Flow Range: 20 – 120 GPM (75,7 – 454, 2 LPM)

PROSERIES 150 1-1/2" (3,8 CM) VALVE

Flow Rate - GPM	20	30	40	50	60	80
PSI Loss - Globe	3.0	2.6	2.3	2.9	4.1	5.5
PSI Loss - Angle	2.7	2.2	1.9	2.2	3.0	4.4

PROSERIES 150 2" (5 CM) VALVE

Flow Rate - GPM	20	30	40	50	60	80	100	120
PSI Loss - Globe	2.2	1.9	1.7	1.5	1.6	2.9	4.8	6.2
PSI Loss - Angle	1.9	1.9	1.7	1.5	1.5	2.1	3.2	4.6

Pressure range: 20-150 psi (1,4 a 10,3 bar)

ELECTRICAL SPECIFICATIONS

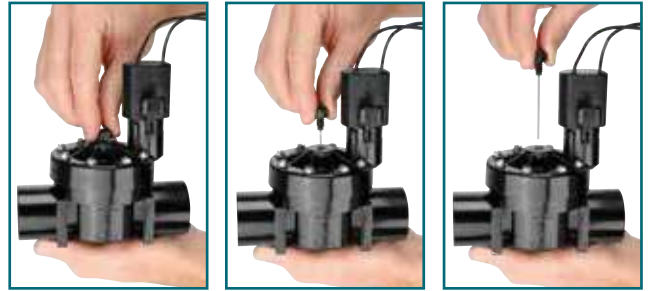
- Standard Solenoid: 24V AC 60 Hz
- Inrush Current: .43 Amps
- Holding Current: .25 Amps

DIMENSIONS

- 1" Models: Height: 5 1/4" (13,3 cm), Width: 3 1/8" (7,95 cm), Length: 5" (12,7 cm)
- 1" Flow Control Models: Height: 5 7/8" (14,9 cm), Width: 3 1/8" (7,95 cm), Length: 5" (12,7 cm)
- 1" Jar-Top Models: Height: 5 1/4" (13,3 cm), Width: 3" (7,6 cm), Length: 4 3/8" (11,1 cm)
- 2" Models: Height: 8-7/8" (22,6 cm), Width: 4-7/8" (12,4 cm), Length: 6-1/3" (16,1 cm)
- 1-1/2" Models: Height: 8" (20,3 cm), Width: 4-1/4" (10,8 cm), Length: 5-1/2" (14 cm)

Manual External Bleed Screw

The 1", 1 1/2" and 2" (2,5, 3,8 and 5 cm) models feature a removable external bleed screw and metering pin to simplify cleaning and maintenance. With the External Bleed Screw, manual operation during start up is easy.



No Tools Required

The K-Rain Jar-Top valve allows for quick and easy servicing after installation.



System Flexibility

Removable inlet cap allows for easy conversion from globe to angle-style valve.



PROSERIES 200 VALVES

Application: Residential / Commercial



A durable, feature-packed electric valve designed to handle up to 200 PSI (13,8 bar) operating pressure.

The glass filled nylon construction and reinforced rubber diaphragm ensure reliable performance.

The 200 series valve has a working pressure range from 6 PSI (0,41 bar) minimum to 200 PSI (13,8 bar) maximum and recommended flow range from 5 to 150 GPM (19 to 568 LPM).

Features and Benefits

- **Durable Glass-filled Nylon Construction and Reinforced Rubber Diaphragm** – Ensures long life and reliable performance.
- **Flow Control** – To adjust water flow as needed (except 7201-J).
- **Large Internal Openings and Self-cleaning Diaphragm During Every Cycle** – Reduces maintenance time.
- **Water Flow Indicator** – Ensures proper installation every time.
- **Electric or Manual Operation**

Models

- 7201** 1" (2,5 cm) Female Thread
- 7215** 1 1/2" (3,8 cm) Female Thread
- 7202** 2" (5 cm) Female Thread

Other options add to part number:

- BSP Female BSP Inlet and Outlet

Specifications

OPERATING SPECIFICATIONS

- Pressure Rating: 6 - 200 PSI (0,41 – 13,79 LPM)
- Flow Range: 5 - 150 GPM (0,41 – 13,79 LPM)

7201 1" (2,5 CM) VALVE

Flow Rate - GPM	5	10	15	20	25	30
PSI Loss	.4	1.16	2.45	4.65	7.25	9.70

7215 1.5" (3,8 CM) VALVE

Flow Rate - GPM	20	25	30	40	50	60	80	100
PSI Loss	2.73	3.04	2.90	2.90	3.41	4.24	7.61	12.9

7202 2" (5 CM) VALVE

Flow Rate - GPM	20	25	30	40	50	60	80	100	120	150
PSI Loss	2.9	2.54	2.17	2.17	2.75	3.4	5.5	7.83	11.66	20.0

Pressure range: 6-200 psi (0,41 – 13,8 bar)

ELECTRICAL SPECIFICATIONS

- Standard solenoid: 24V AC 60 Hz
- Inrush current: .43 amp
- Holding current: .25 amp

DIMENSIONS

- 1" Models: Height: 5-1/4" (13,3 cm), Width: 3-1/8" (7,9 cm), Length: 5-1/8" (13,0 cm)
- 1" Jar-Top Models: Height: 5-3/4" (14,6 cm) Width: 3-1/8" (8 cm), Length: 4-3/4" (12,0 cm)
- 1-1/2" Models: Height: 6-3/4" (17,2 cm), Width: 4-1/4" (10,8 cm), Length: 6-1/4" (15,9 cm)
- 2" Models: Height: 7" (17,8 cm), Width: 4-1/4" (10,8 cm), Length: 7-1/4" (18,4 cm)

